



AV. ZEMPOALTECAS #158 COL. EX. HDA. DEL ROSARIO C.P.02420, MÉXICO, D.F.
TEL.:(55) 5383 6141 / 5019 3944
e-mail: informesyventas@disav.com.mx web: www.disav.com.mx

 DISAV  @disavmx  Disav

 **DELTA**
see what Delta can do™

YOU LIVE IT.

We get it.

WE GET IT.

In the commercial world, you live and breathe the demands of your field. That's why at Delta®, we create solutions that address your specific needs. Whether you serve the healthcare, hospitality, education, or multi-family market, you're sure to find innovative faucets and showers from Delta that provide performance without breaking budgets. And efficiency without sacrificing experience.







A WaterSense® partner since the program's inception, Delta Faucet Company is proud to be the EPA's 2011 WaterSense Manufacturer Partner of the Year. Currently, over 80% of Delta's bath suites feature showerheads and handshowers that meet WaterSense requirements, using 20-40% less water than the industry standard.* Our WaterSense labeled lavatories use 32% less* water—and all perform as well or better than their less-efficient counterparts.

Delta® products also offer sustainability in the form of long-lasting durability—thanks to smart solutions like DIAMOND™ Seal Technology—as well as contributing to LEED® certification.



How to use this catalog.

Look for these icons throughout the catalog to easily identify key features of our commercial products.

 = Proximity® Sensing Technology


 = H2Optics® Technology

 = HydroPower® Technology**

 = DIAMOND™ Seal Technology


 = H2Okinetic™ Technology

 = WaterSense® Labeled Product

 = Water-Efficient Product
Lavatory Faucets: flow rate of 1.5 gpm versus Industry Standard ASME A112.18.1/CSA B125.1 of 2.2 gpm and meet CALGreen standards.

Flush Valves: water closet flush valves of 1.27 gpf and urinal flush valves of .5 gpf versus Industry Standard ASME 112.2.

Showerheads and Handshowers: flow rate of 1.5 or 2.0 gpm versus Industry Standard ASME A112.18.1/CSA B125.1 of 2.5 gpm and meet CALGreen standards.

 = Compliant with State and Federal drinking water legislation.

*Based on flow rate for showerheads and handshowers of 1.5 gpm or 2.0 gpm versus Industry Standard ASME A112.18.1/CSA B125.1 of 2.5 gpm; and flow rate for lavatory faucets of 1.5 gpm versus Industry Standard ASME A112.18.1/CSA B125.1 of 2.2 gpm.
**Available on some battery-operated models.



TABLE OF CONTENTS

WATERSENSE® PARTNER OF THE YEAR . . .	4
SMART SOLUTIONS FOR SMART FACILITIES	6
PROXIMITY FAUCETS	8
LAVATORY FAUCETS	
Lavatory faucets – Electronic	10
Lavatory faucets – Single-handle	12
Lavatory faucets – Two-handle	14
Lavatory faucets – Metering	16
FLUSH VALVES	
Flush valves – Electronic	18
Flush valves – Manual	20
HEALTHCARE SPECIALTIES	
Surgeon scrub up	24
General surgeon scrub up	25
Laboratory	26
Bedpan cleansers	27
GENERAL SINK FAUCETS	
Sink faucets – Single-handle	30
Sink faucets – Two-handle	32
Sink faucets – Wall mount	34
BATH ACCESSORIES	36
MULTICHOICE® UNIVERSAL	38
TUB AND SHOWER	40
SHOWERHEADS AND DRAINAGE	42
WEB	43

Delta Commercial Technical Service
800.387.8277

SMART SOLUTIONS FOR SMART FACILITIES.



Proximity® Sensing Technology.

For the most responsive electronic faucets in the industry, look no further than Delta® faucets featuring Proximity Sensing Technology, the next generation in hands-free functionality. Proximity Sensing Technology enables one to turn on the water simply by placing a hand near the faucet spout. The entire faucet body acts as a sensor, responding when activated. There are no optics or infrared to maintain. Consider Proximity Sensing Technology for an all-around responsive faucet experience.

H₂Optics® Technology.

Delta electronic faucets and flush valves with H₂Optics Technology operate consistently, time after time, regardless of interference factors such as dark clothing or lighting conditions. All electronic faucets and flush valves featuring H₂Optics Technology are water-efficient*—contributing to LEED® certification.

*Water-Efficient Product—Lavatory faucets: flow rate of 1.5 gpm versus Industry Standard ASME A112.18.1/CSA B125.1 of 2.2 gpm.
Flush valves: water closet flush valves of 1.27 gpf and urinal flush valves of .5 gpf versus Industry Standard ASME 112.2.

Battery Backup.

Battery backup allows hardwire units to continue operating during power outages, by switching to power from a 9-Volt battery until power is restored. Now available with the following Delta series: 590-HDF, 590LF, 590-P, 590T, 590TP, 591T, 591TP, 600T, 860T, 1500T, 3000T, 81THW and HWA, and 1600T.





H₂Okinetic™ Technology.

By combining luxury and efficiency, H₂Okinetic Technology delivers a truly unique shower experience. Its kinetic wave pattern and large droplets that retain their heat create the feeling of more water, without using more water. In fact, H₂Okinetic showerheads feel like a full flow 2.5 gpm, but actually operate at 1.5 or 2.0 gpm—which can result in a 36% decrease** in water usage compared to a high-flow system and help contribute points toward LEED® certification.

**Based on flow rate for showerheads of 1.5 gpm or 2.0 gpm versus Industry Standard ASME A112.18.1/CSA B125.1 of 2.5 gpm.



DIAMOND™ Seal Technology.

Long faucet life is crucial in keeping maintenance hassles and building operating costs at a minimum. DIAMOND Seal Technology utilizes a diamond-coated ceramic cartridge, built to last up to 10 times longer than the industry standard.† And once inside the faucet, water is not in contact with metal contaminants.

†Industry standard based on ASME A112.18.1 of 500,000 cycles.

MultiChoice® Universal.

One rough. Unlimited possibilities. MultiChoice Universal provides the flexibility to upgrade the style or functionality of showers without altering the plumbing behind the wall. Saves time and hassle—streamlining the whole plumbing and installation process while eliminating the opportunity for the wrong valve in the wall. More refined temperature limit stop allows temperatures to be set more precisely. Plus, multiple connection options and a high-flow rough for shower-only configurations only add to the valve's flexibility.



PROXIMITY® SENSING TECHNOLOGY

A New Take on Hands-Free
Requires no optics or infrared sensors; the whole faucet body acts as a sensor.



Single-Hole Arzo® with Proximity Sensing Technology
600T040 – 1.5 gpm
600T050 – 0.5 gpm

- Hardwire operation
- Battery option available
- Cast brass body
- No anti-rotational pin
- Surface-mounted control box
- Optional 4" decorative coverplate



Single-Hole Grail® with Proximity Sensing Technology
610T040 – 1.5 gpm
610T050 – 0.5 gpm

- Hardwire operation
- Battery option available
- Cast brass body
- No anti-rotational pin
- Surface-mounted control box
- Optional 4" decorative coverplate



Single-Hole High-Rise Faucet with Proximity Sensing Technology
590TP0120

- Hardwire operation
- Battery option available
- Cast brass body
- Anti-rotational pin
- 1.5 gpm laminar outlet
- Surface-mounted control box
- Optional 4" or 8" forged coverplate



3-Hole 4" Centerset Faucet with Proximity Sensing Technology
591TP0250

- Hardwire operation
- Battery option available
- Cast brass body
- 0.5 gpm spray outlet
- Surface-mounted control box



Single-Hole High-Rise Faucet with Proximity Sensing Technology
590-PLGHDFHW

- Hardwire operation
- Battery option available
- Metal construction
- Anti-rotational pin
- 0.5 gpm spray outlet
- Surface-mounted control box
- Optional 4" or 8" coverplate



Hardwire models are also available with the battery backup option referenced on page 6.

For additional information on the models shown above, as well as other available models, please go to www.specselect.com.

ELECTRONIC LAVATORY FAUCETS



Durable Performance

Hands-free functionality durable enough to withstand a wide variety of commercial applications.

590T1120    



3-Hole 4" Centerset Faucet
591T1220

- Featuring H2Optics® Technology
- Cast brass body
- Battery operation
- Adjustable run time and distance setting
- Hardwire option available
- 1.5 gpm vandal-resistant laminar outlet



Single-Hole High-Rise Faucet
590T1120

- Featuring H2Optics Technology
- Cast brass body
- Battery operation
- Anti-rotational pin
- Adjustable run time and distance setting
- Available in 4" and 8" configurations
- Hardwire option available
- 1.5 gpm vandal-resistant laminar outlet



Single-Hole Faucet
590-LGHGMHDF

- Featuring H2Optics Technology
- Battery operation
- Metal construction
- Anti-rotational pin
- 0.5 gpm vandal-resistant spray outlet
- Obsolete Q4 2012



Hardwire models for the 590T, 591T, 590-HDF, 590LF-HDF, 591-HDF and the 591LF-HDF series are also available with the battery backup option referenced on page 6.



**Single-Hole Faucet
590LF-LGHGMHDF**

- Featuring H2Optics Technology
- Battery operation
- Metal construction
- Anti-rotational pin
- 0.5 gpm vandal-resistant spray outlet
- Available Q3 2012



3-Hole 4\"/>

- Featuring H2Optics Technology
- Battery operation
- Metal construction
- 0.5 gpm vandal-resistant spray outlet
- Obsolete Q4 2012



3-Hole 4\"/>

- Featuring H2Optics Technology
- Battery operation
- Metal construction
- 0.5 gpm vandal-resistant spray outlet
- Available Q3 2012



**Single-Hole Electronic Soap Dispenser
DESD-550 – All-cast body
DESD-250 – Non-metal version**

- Solid machined shank with low profile spout
- Standard 800 ml soap bottle
- Fits on decks up to 2" thick
- LED indicators: Yellow = low battery, Red = low soap
- Hardwire kit available



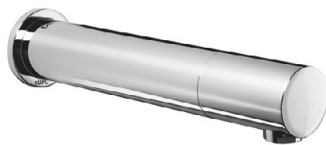
**Single-Hole Faucet
DEMD-301**

- Battery operation
- Pre-mixed water
- Adjustable maximum run time
- Adjustable sensor range
- No anti-rotational pin
- Optional 4" forged coverplate available
- Hardwire kit available
- Remote control available (060967A)
- 0.5 gpm outlet



**Single-Hole Faucet with Side Mixer
DEMD-311**

- Battery operation
- Side mixer to adjust water temperature
- Adjustable maximum run time
- Adjustable sensor range
- No anti-rotational pin
- Optional 4" forged coverplate available
- Hardwire kit available
- Remote control available (060967A)
- 0.5 gpm outlet



**Concealed Wall Mount Faucet
DEMD-402 – 8" spout
DEMD-404 – 6" spout**

- Adjustable maximum run time
- Hardwire operation only
- Tempered water supply
- Adjustable sensor range
- Remote control available (060967A)
- 0.5 gpm outlet



**Single-Hole Faucet
DEMD-101**

- Battery operation
- Above-deck solenoid and battery
- Vandal-resistant wrench flat spray outlet
- Model with side mixer: DEMD-111



**Single-Hole Faucet with Side Mixer
DEMD-211**

- Hardwire operation
- Vandal-resistant wrench flat spray outlet
- Model without side mixer: DEMD-201



SINGLE-HANDLE LAVATORY FAUCETS

Ceramic Disc Technology

Smooth operation makes this washerless faucet low-maintenance. The volume and temperature control is integrated so the faucet can be turned on in the same position as it was turned off for consistent temperature setting.

Longer Reaching Spout

Provides a 5-3/4" reach compared to the industry standard of 4". This reduces the chance of the user's hands touching the back of the sink and the amount of water pooling on the counters.

Water-Efficient Outlet

Available in four optional reduced-flow outlets, ranging from 0.5 gpm to 1.5 gpm.

Solid Cast Brass Body

Construction of this 4-pound faucet offers little opportunity for bacteria to collect and makes cleaning easy.





**4" Centerset Faucet
22C101**

- Cast brass body
- Vandal-resistant lever handle and 1.5 gpm outlet
- Ceramic disc technology
- Rotational limit stop



**4" Centerset Faucet
501LF-HGMHDF**

- Vandal-resistant lever handle and 0.5 gpm outlet
- Adjustable handle limit stop
- Diamond-embedded ceramic disc cartridge
- .35 gpm available: 501LF-TGMHDF



**4" Centerset Faucet
515LF-HDF**

- Includes metal pop-up lever
- Vandal-resistant 6" elbow handle and 1.5 gpm outlet
- Adjustable handle limit stop
- Diamond-embedded ceramic disc cartridge



**Single-Hole Faucet
22C631**

- Cast brass body
- Vandal-resistant lever handle and 1.5 gpm outlet
- Ceramic disc technology
- Rotational limit stop



**4" Centerset Faucet
22C131
22C331 – With metal pop-up**

- Cast brass body
- Vandal-resistant lever handle and 1.5 gpm outlet
- Ceramic disc technology
- Rotational limit stop



**Single-Hole Faucet
570-WFHDF**

- 4" swing spout
- Vandal-resistant lever handle and 2.2 gpm outlet
- Stainless steel ball with high temperature limit stop
- 1.5 gpm 570LF-WFHDF: Available Q4 2012



**Widespread Single Control Faucet
24T2643**

- Vandal-resistant 6" elbow lever handle
- Stainless steel ball with high temperature limit stop
- 4" to 16" adjustable centers
- 1.5 gpm outlet



For additional information on the models shown above, as well as other available models, please go to www.specselect.com.

TWO-HANDLE LAVATORY FAUCETS

Seamless Brass Spout

Compared to traditional tubular spouts on the market, this spout boasts a .09" wall thickness which provides superior force and vandal resistance.

Smooth-End Spout

This maintenance-free laminar flow outlet has the flow control located in the base of the spout, and the chrome-plated smooth end eliminates crevices for bacteria to form.

Limited Swing Gooseneck

Available in three variations and multiple sizes, this option limits movement of the spout to a maximum 120° rotation.

4" Blade Handles with Sanitary Hood

These vandal-resistant handles are designed to help prevent the growth of bacteria. The sanitary hood feature provides significantly less areas for bacteria to collect.



6"-12" Widespread Faucet
23C674-LS

- Vandal-resistant 4" blade handles with sanitary hood
- Laminar flow control smooth-end spout (1.1 gpm)
- CER-TECK® cartridge



6"-16" Widespread Faucet
3579-WFLGHDF

- Vandal-resistant wrist blade handles
- 1.5 gpm outlet
- Rigid gooseneck spout
- 3579LF-WFLGHDF: Available Q4 2012



6"-12" Widespread Faucet
23C642

- Vandal-resistant 4" hooded blade handles
- CER-TECK cartridge
- 1.5 gpm outlet
- Rigid/swivel gooseneck spout



4" Centerset Faucet
21C142

- Cast brass body
- Vandal-resistant 4" hooded blade handles
- CER-TECK cartridge
- 1.5 gpm outlet



6"-12" Widespread Faucet
23C333

- Vandal-resistant 3" hooded lever handles and 1.5 gpm outlet
- CER-TECK cartridge



4" Centerset Faucet
2529LF-LGHGMHDF

- Vandal-resistant wrist blade handles
- 0.5 gpm outlet



4" Centerset Faucet
21C143

- Cast brass body
- Vandal-resistant 3" hooded lever handles
- CER-TECK cartridge
- 1.5 gpm outlet



For additional information on the models shown above, as well as other available models, please go to www.specselect.com.

METERING LAVATORY FAUCETS

Cast Brass Body

Construction of this faucet offers little opportunity for bacteria to collect and makes cleaning easy.

Water-Efficient Outlet

Comes standard with a 0.5 gpm flow rate. Each handle is set not to exceed a flow of 0.25 gallons per activation.

Adjustable

Easily adjust the run time to match your water pressure.

ADA Tip Action Lever Handles

Offer ease of use and meet ADA standards—a feature not typically offered in metering faucets.





**4" Centerset Faucet
86T1153**

- Cast brass body
- Vandal-resistant tip action lever handles and outlet
- Adjustable close time



**Single-Hole Faucet
87T104**

- Cast brass body
- Vandal-resistant push-style handle and outlet
- Adjustable close time



**Single-Hole Faucet
87T105**

- Cast brass body
- Vandal-resistant tip action lever handle and outlet
- Adjustable close time



**Single-Hole Faucet
701-HDF**

- Vandal-resistant push-style handle and outlet
- Adjustable close time
- 701LF-HDF: Available Q4 2012



**4" Centerset Faucet
2507-HDF**

- Vandal-resistant push-style handles and outlet
- Adjustable close time
- 2517LF-HDF: Available Q4 2012



ELECTRONIC FLUSH VALVES + OPTIONS

Easy to Install and Adjust

Right out of the box, the batteries are already installed and setup is a breeze with adjustable settings.

Vandal Resistant

All metal heavy-duty construction. Chloramine-resistant diaphragm.

Cost-Effective, Hands-Free Upgrade for Your Manual System

Retrofit an electronic flush valve onto an existing manual unit with a simple kit.



81T201HWA – Hardwire | 81T201BTA – Battery



Exposed Electronic Flush Valve
81T201-WMSHW – For water closet (hardwire)
81T231-WMSHW – For urinals (hardwire)

- Featuring H₂Optics® Technology
- Chloramine-resistant diaphragm
- Electronic manual override button
- Vandal-resistant stainless steel cover



Electronic Urinal Flush Valve
81T231HWA – Hardwire
81T231BTA – Battery

- Featuring H₂Optics Technology
- Volume control, field adjustable
- Chloramine-resistant diaphragm
- Metal manual override button
- Replaceable lens window



Electronic Water Closet Flush Valve
81T201HWA – Hardwire
81T201BTA – Battery

- Featuring H₂Optics Technology
- Volume control, field adjustable
- Chloramine-resistant diaphragm
- Metal manual override button
- Replaceable lens window





Concealed Electronic Washdown Urinal
 1600T9001RI – Rough-in (hardwire)
 1600T9001TR – Trim (hardwire)

- Featuring H₂Optics Technology
- Electronic manual override button
- Vandal-resistant stainless steel cover
- Available in various rough-in and trim options
- Factory plumbed for easy installation



Concealed Electronic Flush Valve
 1600T6103RI – Rough-in (hardwire)
 1600T6103TR – Trim (hardwire)

- Featuring H₂Optics Technology
- Electronic manual override button
- Water closet and urinal models available
- Vandal-resistant stainless steel cover
- Available in various rough-in and trim options
- Factory plumbed for easy installation



Side Mount Electronic Flush Kit
 DEFM-100

- Retrofit model
- For use on 81T Teck® exposed manual flush valves and 86T metering washdown urinals
- Can also be used on Sloan®, Zurn® and Crane models
- Courtesy manual flush button
- Batteries included



Electronic Flush Retrofit Kit for Delta® Valves
 81T201BTA-20 – Battery (water closet)
 81T201HWA-20 – Hardwire (water closet)

- Retrofit model
- Featuring H₂Optics Technology
- Complete valve less stop, cover tube and wall flange
- Chloramine-resistant diaphragm
- Metal manual override button
- Replaceable lens window



Electronic Flush Retrofit Kit
 81TWCBTRKA – Water closet
 81TURBTRKA – Urinal

- Retrofit model
- Featuring H₂Optics Technology
- Battery operation
- Converts manual exposed flush valves to electronics
- New diaphragm, seat and filter screen included
- For hardwire kit, order 061069A
- Replaceable lens window



Electronic Flush Retrofit Kit for Sloan/Zurn Valves
 81T231BTA-30 – Battery (water closet)
 81T231HWA-30 – Hardwire (water closet)

- Retrofit model
- Featuring H₂Optics Technology
- Complete valve less stop with modified tail to fit Sloan/Zurn stop
- Chloramine-resistant diaphragm
- Metal manual override button
- Replaceable lens window



Electronic Washdown Urinal Valve
 DEMD-86505

- Battery operation
- Adjustable sensor range
- Adjustable flow time
- Remote control available



Hardwire models are also available with the battery backup option referenced on page 6.

For additional information on the models shown here, as well as other available models, please go to www.specselect.com.

MANUAL FLUSH VALVES



Features of the Delta® Flush Valve:

- Non-hold open handle
- Chloramine-resistant diaphragm
- Easily adjustable settings
- All metal heavy-duty construction
- Optional trap seal primer
- Constant peak flow





**Water Closet Flush Valve
81T201**

- Chloramine-resistant diaphragm
- ADA vandal-resistant non-hold open handle
- Factory set 1.0 U.S. gallons flush at 60 psi
- Field adjustable



**Urinal Flush Valve
81T231**

- Chloramine-resistant diaphragm
- ADA vandal-resistant non-hold open handle
- Factory set 0.5 U.S. gallons flush at 60 psi
- Field adjustable



**Metering Washdown Urinal Valve
86T505**

- ADA vandal-resistant handle
- Back inlet stop for 1/2" supply





SOLUTIONS THAT WORK HARD

to make your job

After decades of experience in serving the needs of the healthcare industry, we understand the unique issues of this ever-changing market. And we're committed to delivering the most innovative and reliable solutions that make it easier to get things done—so you can focus on what you do best.





easier.

EVER

SURGEON SCRUB UP



3000T3370A with 24T3003  



Electronic Wall Mount Faucet
1501T4670

- Featuring H₂Optics® Technology
- Wall mount rigid gooseneck spout with integral sensor in base
- Adjustable sensing range and time out
- Battery operation
- Smooth-end spout with 1.5 gpm laminar flow



Electronic Deck Mount Faucet
1501T3370

- Featuring H₂Optics Technology
- Laminar 1.5 gpm flow control smooth-end rigid spout
- Adjustable sensing range and time out
- Battery operation
- Single-hole model—also available in 4" and 8" options



Electronic Deck Mount Faucet
3001T3420A

- Featuring H₂Optics Technology
- Control module with LCD screen—six programmable settings
- Battery operation
- 4" model—also available in single-hole and 8" options
- Rigid spout with 1.5 gpm vandal-resistant laminar outlet





Above Deck Mixing Valve for 1500T & 3000T Models
24T3003

- Single-control mixing valve
- Vandal-resistant 6" elbow handle
- Stainless steel ball



3000T Series Touch Pad Control Module with LCD Screen (Standard with 3000T Series Products)

Adjustable Settings

- Run time—length of time water runs after user removes hands from sensing zone.
- Sense time—response time for sensor to react to hands placed in sensing zone.
- Block time—time required between uses; prevents faucet from running water excessively.
- Sensor range—distance at which sensor detects hands in wash area.
- Auto timer—length of time before faucet stops running in the event the sensor is obstructed by foreign object.
- Metering mode—allows for continuous flow for a set amount of time.
- Self tests for troubleshooting.
- Supplies diagnostic usage information.



3-Position Switch (060651A or -KS Suffix with 3000T Products)

- Designed so healthcare facilities can continue to follow infectious control procedures.

Switch Settings

- ON – Solenoid goes into continuous run so water lines can be flushed with high-temperature water.
 - Do not exceed 71° C (160° F) during flushing of lines as higher temperatures may damage sensor components.
- AUTO – Faucet functions according to regular settings.
- OFF – Solenoid is blocked from operating so cleaning staff can clean sink without faucet operating.

GENERAL SURGEON SCRUB UP



Surgeon Scrub Faucet
54T5432A

- Floor mount self-close double foot pedal valve
- Deck mount rigid/swivel gooseneck spout
- Vandal-resistant 1.5 gpm laminar with Agion® antimicrobial outlet
- Slow close version available as special order



Surgeon Scrub Faucet
54T5332A

- Wall mount self-close double foot pedal valve
- Deck mount rigid/swivel gooseneck spout
- Vandal-resistant 1.5 gpm laminar with Agion® antimicrobial outlet
- Slow close version available as special order



For additional information on the models shown above, as well as other available models, please go to www.specselect.com.

LABORATORY

Services available for ball valves and needle valves:

- Air
- Argon
- Carbon Dioxide
- Cold Water
- Helium
- Hydrogen
- Natural Gas
- Nitrogen
- Propane
- Vacuum

Refer to www.specselect.com for Valve/Service combination availability.



W6635DW



Single Shank Deck Mount Mixing Faucet
W6760-9

- In-line vacuum breaker
- Nozzle outlet
- Maximum 1.5" diameter deck hole



Deck Mount Mixing Faucet
W6700-9

- In-line vacuum breaker
- Nozzle outlet
- 2-hole installation



Deck Mount Single Water Valve
W6600-10

- Angle vacuum breaker
- Nozzle outlet



Deck Mount Turret
W6210GAS

- Single ball valve hose cock
- Available in multi-valve configurations for deck and wall mount



Deck Mount Turret
W6220GAS

- Two ball valve hose cocks at 90°




Pure Water Faucet
W6635DW

- Self-close Celcon® valve
- Gooseneck spout with Tygon® liner



BEDPAN CLEANSERS



54T1104 



Concealed Wall Mount
Bedpan Cleanser
53T5547

- Spout with double check vacuum breaker
- Reinforced hose and hanger
- Insulated handle on wand
- Spray outlet with stop
- Single-handle mixing control valve



Wall Mount Double Foot Pedal
Valve Bedpan Cleanser
54T1434A

- Wall-mounted vacuum breaker
- Reinforced hose and hanger
- Insulated handle on wand
- Spray outlet with stop



Wall Mount Bedpan Cleanser
54T1104

- Reinforced hose and hanger
- Insulated handle on wand
- Spray outlet with stop
- Double check vacuum breaker





UNIVERSAL DESIGN.

Universal appeal

When it comes to products with ease-of-use and overall accessibility, Delta® provides the ultimate in selection. From wall mount faucets to bath accessories, you'll find a wide variety of styles, designs, and configurations that meet a broad spectrum of regulations, while still addressing the specific needs of your facility.



SINGLE-HANDLE GENERAL SINK FAUCETS

ADA-Compliant Lever Handle
Allows you to carry a stylish design throughout your entire facility.

Adjustable Handle Limit Stop
Limits the movement of the handle into the "hot" zone.

DIAMOND™ Seal Technology
Utilizes a diamond-coated ceramic cartridge, built to last 10 times the industry standard.* Once inside the faucet, water is not in contact with metal contaminants.

*Industry standard based on ASME A112.18.1 of 500,000 cycles.



Single-Lever Kitchen Faucet
100LF-HDF

- Vandal-resistant elbow handle and 1.5 gpm outlet
- 3-hole installation
- Adjustable handle limit stop
- Diamond-coated ceramic cartridge



Single-Lever Kitchen Faucet
101LF-HDF

- Vandal-resistant elbow lever handle
- Adjustable handle limit stop
- Single-hole installation
- 1.5 gpm outlet
- Diamond-coated ceramic cartridge



8" Deck Mount Single-Lever
Kitchen Faucet
400LF-HDF

- Side sprayer
- Vandal-resistant elbow lever handle and 1.5 gpm outlet
- Adjustable handle limit stop
- 3-hole installation
- Diamond-coated ceramic cartridge



Single-Lever Utility Faucet
710LF-HDF

- Vandal-resistant elbow handle
- Adjustable handle limit stop
- 10"-high rigid spout
- 1.5 gpm vandal-resistant outlet
- Diamond-coated ceramic cartridge



Single-Lever Pantry Faucet
27C643

- Vandal-resistant lever handle
- CER-TECK® cartridge
- Rigid/swivel gooseneck spout; other types and sizes available



TWO-HANDLE GENERAL SINK FAUCETS

Seamless Brass Spout

Compared to traditional tubular spouts on the market, this spout boasts a .09" wall thickness, which provides superior force and vandal resistance.

Water-Efficient Outlet

Available in four optional reduced flow outlets, ranging from 0.5 gpm to 1.5 gpm.

Rigid/Swivel Gooseneck Spout

Optional brass collar is supplied to accommodate rigid or swivel installation needs. Limited swing also available.

Cast Brass Body

Construction of this faucet offers little opportunity for bacteria to collect and makes cleaning easy.





8" Cast Deck Mount Faucet
26C3942

- Vandal-resistant 4" hooded blade handles
- CER-TECK® cartridge
- 1.5 gpm outlet
- Rigid/swivel gooseneck spout



Single Shank Mixing Faucet
25C3847

- Vandal-resistant 2-1/2" balanced lever handles
- CER-TECK cartridge
- 1.5 gpm outlet
- Rigid/swivel gooseneck spout



8" Below Deck Mount Faucet
27C2923

- Vandal-resistant 1.5 gpm laminar with Agion® antimicrobial outlet
- Vandal-resistant 3" hooded lever handles
- CER-TECK cartridge
- Rigid/swivel gooseneck spout



4" Cast Deck Mount Faucet
27C4844

- Vandal-resistant 4" blade handles
- CER-TECK cartridge
- 1.5 gpm outlet
- Rigid/swivel gooseneck spout



4" Cast Deck Mount Faucet
27C5833

- Includes pop-up
- Vandal-resistant 1.5 gpm outlet and 3" hooded lever handles
- CER-TECK cartridge
- Rigid/swivel gooseneck spout



8" Center Wall Mount Pre-Rinse Faucet
55C1513

- Includes auto shut-off
- Vandal-resistant 3" hooded lever handles
- Supplied with standard water/energy-saving sprayhead with a flow rate of 1.6 gpm
- CER-TECK cartridge
- Optional 1.2 gpm spray face included



Four ADA Handle Options



1



- 4" Hooded Blade (Available with optional red/blue temperature indicator)

2



- 3" Hooded Lever (Available with optional red/blue temperature indicator)

3



- 4" Blade with Sanitary Hood (Available with optional red/blue temperature indicator—shown above)

4



- 6" Wrist with Sanitary Hood

For additional information on the models shown above, as well as other available models, please go to www.specselect.com.

WALL MOUNT GENERAL SINK FAUCETS

Wall Brace

Reinforces the faucet-to-wall connection and helps to support heavy pails of water.

Body-Mounted Vacuum Breaker with Garden Hose End

The vacuum breaker prevents backflow of sinkwater into potable water system. The standard hose-end spout makes adding and removing garden hoses simple.

Integral Checks

Eliminate crossflow—preventing the hot water from traveling to the cold side and vice versa.

Integral Stops

Allow for ease of maintenance—no need to shut the entire water supply off when you can do it right at the faucet.





8" Center Wall Mount Service Sink Faucet
28C2383

- Adjustable top/bottom brace
- Body-mounted angle vacuum breaker with garden-hose end
- Includes integral check stops
- Vandal-resistant 3" hooded lever handles
- CER-TECK® cartridge



8" Center Wall Mount Service Sink Faucet
28C8073

- Spout end vacuum breaker with garden-hose end
- Includes 48" hose and stainless steel hanger
- Rough chrome-plated
- Includes integral check stops
- Vandal-resistant 3" hooded lever handles
- CER-TECK cartridge



8" Center Wall Mount Sink Faucet
28C6932

- Includes integral check stops
- Vandal-resistant 1.5 gpm outlet and 4" hooded blade handles
- CER-TECK cartridge
- Rigid/swivel gooseneck spout



8" Center Wall Mount Service Sink Faucet
28T9

- Includes integral stops
- ASSE-approved integral vacuum breaker with garden-hose end
- Metal cross handles
- Compression cartridge
- Rough chrome-plated



8" Center Wall Mount Sink Faucet
28C4434

- Vandal-resistant 1.5 gpm outlet and 4" blade handles with sanitary hood
- CER-TECK cartridge
- 11" tubular swing spout



BATH ACCESSORIES



Grab Bars



1-1/2" x 24" Grab Bar
40124-SS

- Stainless Steel finish
- For persons up to 500 pounds
- Concealed mounting
- Also available in lengths of 18", 30", 36", 42", and 48"



1-1/4" x 24" Grab Bar
41124-SS

- Stainless Steel finish
- For persons up to 500 pounds
- Concealed mounting
- Also available in lengths of 18", 30", 36", and 42"



1-1/4" x 24" Grab Bar
With Decorative Flange
41224-SN

- Satin Nickel finish
- For persons up to 500 pounds
- Concealed mounting
- Also available in 18" length



Bathroom



24" Brass Towel Shelf With Towel Bar
43024

- Concealed mounting
- Mounting hardware included



24" Brass Towel Shelf With Double Towel Bar
43424

- Concealed mounting
- Mounting hardware included



1" x 5' Bow Shower Rod With Brackets
42205-ST

- Adjustable length
- Oval design prevents rotation
- Also available in 6' length



Recessed Paper Holder
with Plastic Roller
45070-ST

- Plastic spring-activated roller
- Twin side-by-side model available



Recessed Extra Roll Paper Holder
45470-ST

- Plastic spring-activated roller
- Stores extra roll behind roll in use



Twin Paper Holder
45272

- Two brass spring-activated rollers

Public Washroom



Recessed Towel Dispenser
and Waste Receptacle
45568-SS

- Holds 475 multi-fold or 350 C-fold towels
- Removable 2-gallon waste receptacle
- Includes tumbler lock and key



Vertical Liquid Soap Dispenser
44080-SS

- 40 oz. capacity
- Shut-off soap valve
- Mounting hardware included



Toilet Seat Cover Cabinet
49000-SS

- 500 seat cover capacity
- Mounting hardware included

MULTICHOICE® UNIVERSAL.



EXCLUSIVE BENEFITS FROM MULTICHOICE UNIVERSAL

Eliminates the Wrong Valve in the Wall.

Now you don't have to worry about ordering and installing the wrong valve, no matter which tub/shower your customer chooses.

Flexibility Throughout the Building Process.

Changes to the shower can be made at any time in the building process without altering the behind-the-wall plumbing.

Saves Time and Hassle.

Streamlines the whole plumbing and product installation process.

Temperature Accuracy.

More refined temperature limit stop allows you to set temperatures more precisely.

Mounting Bracket

Provides a sturdy method to secure the valve to a stringer and prevents rocking.

Square Plasterguard

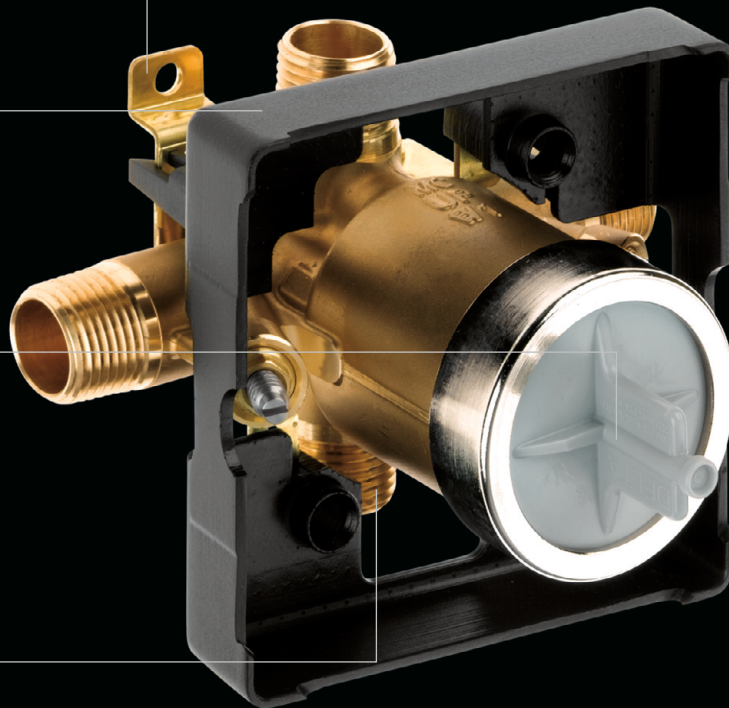
The size of a standard tile allows for simple 90° cuts. Snaps into place with no tools required to remove.

Heat-Resistant Pressure Test Cap

Allows for air or water testing before the valve cartridge is installed up to 300 psi. Easy access for flushing out the system.

Three Connection Types

Provides universal connection options for every type of piping—IPS, PEX and UNIVERSAL.



R10700-UNWS

ONE ROUGH. UNLIMITED POSSIBILITIES.



R10300-UNWS MultiChoice Universal Valve Body with Push-Button Diverter

WS—with stops recommended for 'Commercial' applications.



Single-Function Pressure-Balanced Valve Cartridge

Functions with a single control for temperature only.



Dual-Function Thermostatic Valve Cartridge

Keeps water temperature consistent by actually measuring and monitoring the temperature of the water and automatically adjusting the water mix to maintain a more precise water temperature.

TUB AND SHOWER

Adjustable Showerhead
Allows users to select their preference between full, massage and combination settings.

Diverter Valve
Makes it easy for the user to switch between the showerhead and handshower.

MultiChoice® Universal
Provides unparalleled flexibility with multiple cartridge options.

ADA Slide Bar
When installed according to spec, this stainless steel bar serves as both a slide bar and an ADA-compliant bar.

Optional Double Spiral Hose
This 69" hose is ideal for commercial applications.



Add-On Options:

- Quick disconnect for hose
- Longer slide bar
- Adjustable volume control

T13H322-20 R10700-UNWS





Tub and Shower
T13H283 – Trim
R10000-UNWS – Rough-in

- MultiChoice® Universal pressure balance tub and shower
- H₂Okinetic™ water-efficient showerhead—1.5 gpm
- Vandal-resistant lever blade handle
- Escutcheon with non-removable red/blue marking



Shower
T17TH125 – Trim
R10000-UNWS – Rough-in

- TempAssure® thermostatic shower
- Touch-Clean 3-setting 2.0 gpm showerhead
- Non-removable red/blue indicators
- Tub and shower trim models available



Tub and Shower
T13490 – Trim
R10000-UNWS – Rough-in

- MultiChoice Universal pressure balance tub and shower
- Touch-Clean 2.0 gpm showerhead
- Red/blue indicators
- Vandal-resistant lever blade handle



Shower
T13H123 – Trim
R10000-UNWS – Rough-in

- MultiChoice Universal pressure balance shower
- Touch-Clean® 3-setting showerhead—2.0 gpm
- Vandal-resistant lever blade handle
- Escutcheon with non-removable red/blue marking



Shower and Handshower with Grab/Slide Bar
T13H322-20 – Trim
R10700-UNWS – Rough-in

- MultiChoice Universal pressure balance shower with diverter valve
- Touch-Clean 3-setting 2.0 gpm showerhead
- 1.5 gpm handshower with 24" stainless steel grab/slide bar with ADA adjustable slide
- 69" brass double spiral hose
- Water-efficient configuration available
- Escutcheon with non-removable red/blue marking
- Two check valves in handshower



Push-Button Tub and Shower
T13691 – Trim
R10300-UNWS – Rough-in

- MultiChoice Universal pressure balance tub and shower
- Touch-Clean 2.0 gpm showerhead
- Integral push-button diverter
- Non-removable red/blue indicator



Tub and Shower
T13H232 – Trim
R10000-UNWS – Rough-in

- MultiChoice Universal pressure balance tub and shower
- Water-efficient 1.5 gpm showerhead
- Escutcheon with non-removable red/blue marking



Handshower with Grab/Slide Bar
T17TH155 – Trim
R10000-UNWS – Rough-in

- TempAssure thermostatic shower—2.5 gpm
- 24" stainless steel grab/slide bar with ADA adjustable slide
- Non-removable red/blue indicators
- Vandal-resistant lever handle
- Two check valves in handshower



Push-Button Electronic Shower
860T167 – Hardwire
861T167 – Battery

- Available with various mixing and showerhead options
- Field adjustable shower times
- Vandal-resistant 1.5 gpm showerhead



SHOWERHEADS AND DRAINAGE



RP46384



3-Setting Touch-Clean® Showerhead
RP43381

- 2.0 gpm



Touch-Clean Showerhead
RP38357

- 2.0 gpm



Touch-Clean Showerhead
061048A

- 1.5 gpm



Touch-Clean Handshower
061049A

- 1.5 gpm

RP7405

- 2.5 gpm
- Pause feature



Cast Lavatory Waste
33T260-1

- Open grid strainer less overflow holes
- With overflow holes model available (33T260)
- Less overflow holes, with splash reduction drain cover (33T260-1DC)



Cast P Trap
33T311 - 1-1/4"
33T360 - 1-1/2"

- With cleanout



Standard Brass Fixed Spray Showerhead
060890A

- 2.2 gpm
- Chrome



30° Vandal-Resistant Cast Wall Mount Showerhead
060793A

- 2.0 gpm
- Chrome



H2Okinetic™ Water-Efficient Showerhead
RP46384

- 1.5 gpm



Cast Lavatory Waste
33T290-1

- Offset open grid strainer less overflow holes
- With overflow holes model available (33T290)
- Less overflow holes, with splash reduction drain cover (33T290-1DC)

060710A

- Arm and flange

060991A

- 1.75 gpm

061011A

- 1.5 gpm



THE INNOVATION DOESN'T END HERE.

DELTA COMMERCIAL
see what Delta can do

Products | Smart Solutions | Support and Resources | SpecSelect

WHERE TO BUY | search

Proximity™ Sensing Technology

watch video | learn more | more smart solutions

Proximity™ Sensing Technology is the next generation in responsive hands-free functionality. This revolutionary technology transforms the entire faucet into a sensor, automatically responding when approached.

SpecSelect® | New Products | Responsible. Resourceful.™ | Project Categories

Home | Company | News | Spec Binder | CEU Courses | Green at Delta | Project Categories | Case Studies | Contact Us

There's more to see on our websites: deltacommercialfaucets.com and specselect.com

If you're looking for a particular faucet combination and you didn't see it in this catalog, check out our user-friendly websites for a comprehensive collection.

- Browse by project type, price range, or model number
- Check out product news
- View frequently asked questions and installation tips
- Find a Delta Faucet dealer

Everything you need to make your selection easier is right online at deltacommercialfaucets.com and specselect.com. If you have any additional questions, contact us at 800.345.DELTA.

Delta® Commercial Technical Service
800.387.8277

DELTA COMMERCIAL | **specselect**

Catalog | Index | Parts | Commercial Site

Welcome to SpecSelect®

This state-of-the-art tool delivers exact, specific, and instantaneous information for sourcing commercial products. Explore over 60,000 models for all your project needs whether renovating a healthcare facility, designing a hotel, or specifying a new building; you won't find a more comprehensive online catalogue than SpecSelect.

Catalog | Index | Parts | Commercial Site

Site Requirements | Contact Webmaster | Quotation Edition | Favorites | Privacy Statement | About SpecSelect | Contact Information



AV. ZEMPOALTECAS #158 COL. EX. HDA. DEL ROSARIO C.P.02420, MÉXICO, D.F.
TEL.:(55) 5383 6141 / 5019 3944
e-mail: informesyventas@disav.com.mx web: www.disav.com.mx



DISAV



@disavmx



Disav



Delta® is committed to sustainability and providing smart water delivery solutions that maximize water savings without sacrificing comfort and convenience. Our commitment to sustainability extends to waste reduction and the preservation of natural resources and the environment. That's why we choose to print on Forest Stewardship Council (FSC) certified paper.



see what Delta can do™

A MASCO COMPANY

Delta Faucet Company
55 E. 111th St., P.O. Box 40980
Indianapolis, IN 46280

Masco Canada Limited
350 S. Edgeware Rd.
St. Thomas, Ontario N5P 4L1

deltafaucet.com
800.345.DELTA (3358)

Delta Commercial Technical Service
800.387.8277

©2012 Masco Corporation of Indiana
DL-1759 07/12